

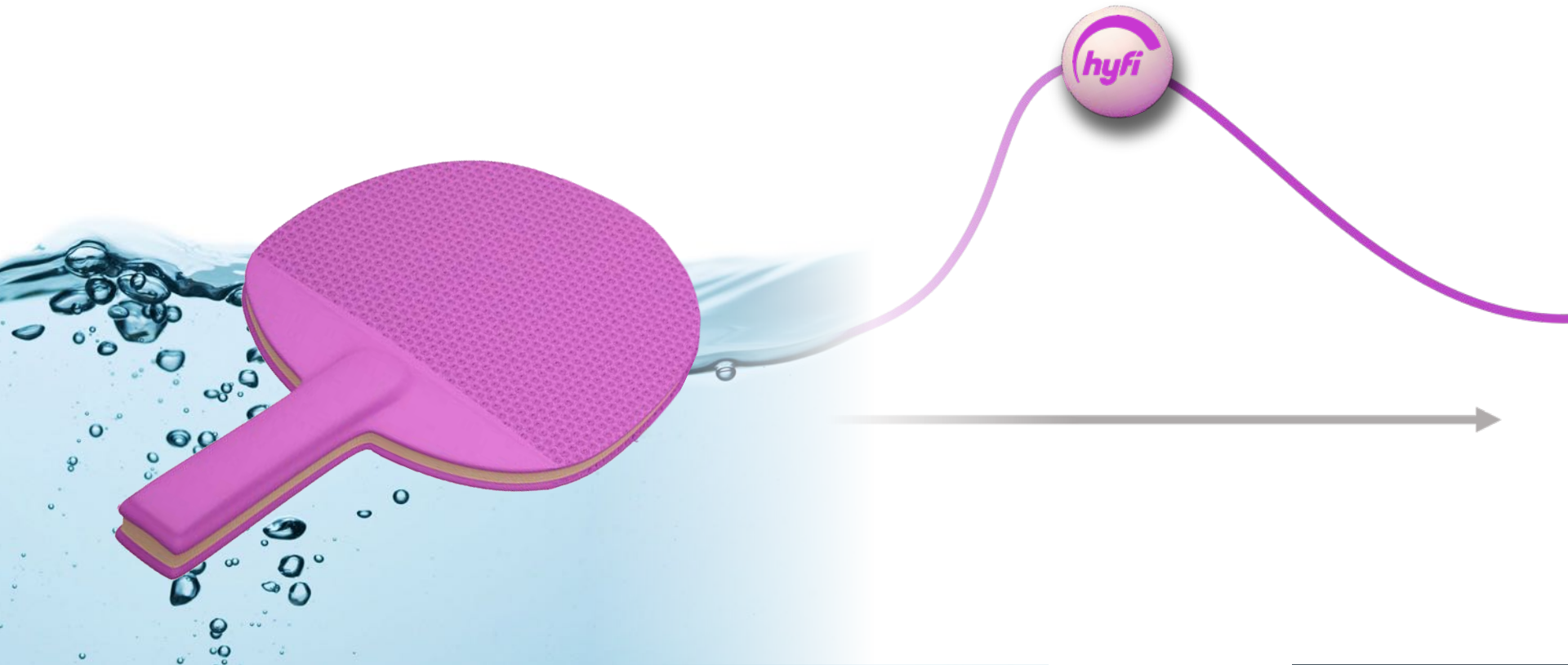


hyfi

Water Levels

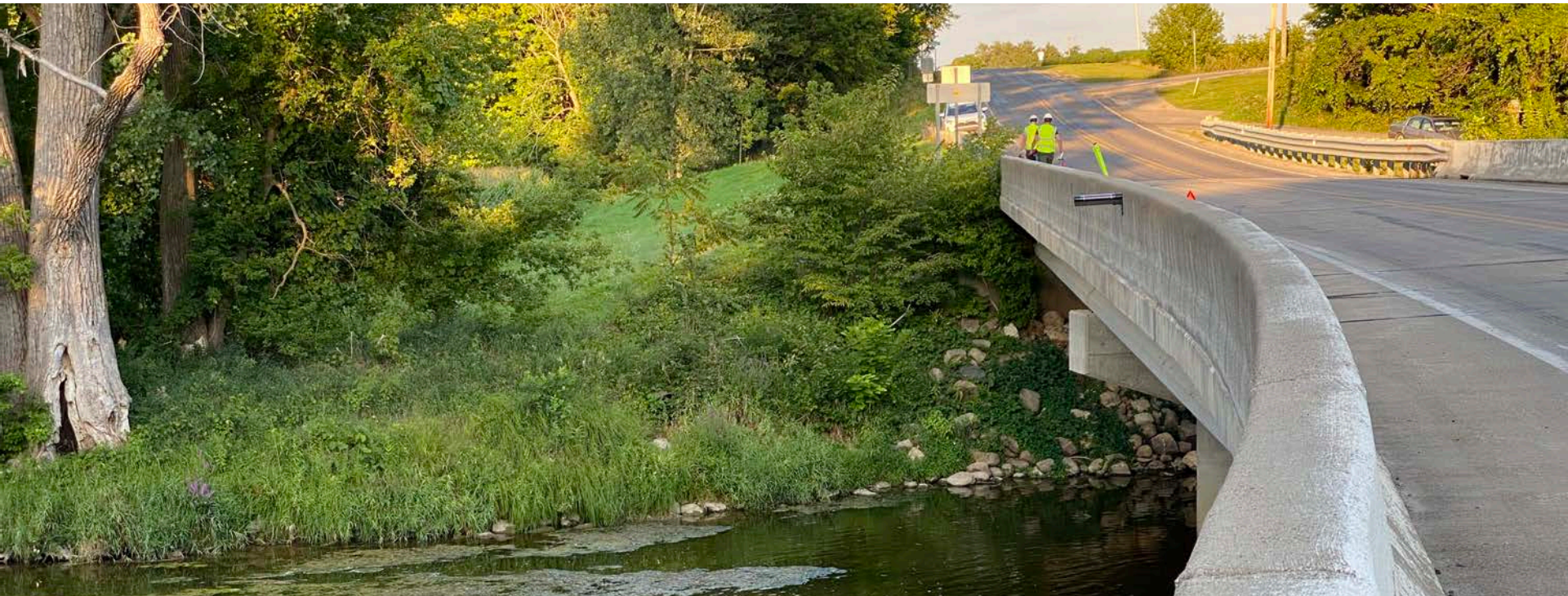
What we do

We report **water levels**. So accurate, imagine knowing the precise location of a floating ping pong ball.



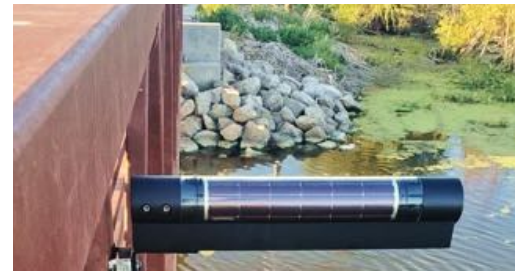
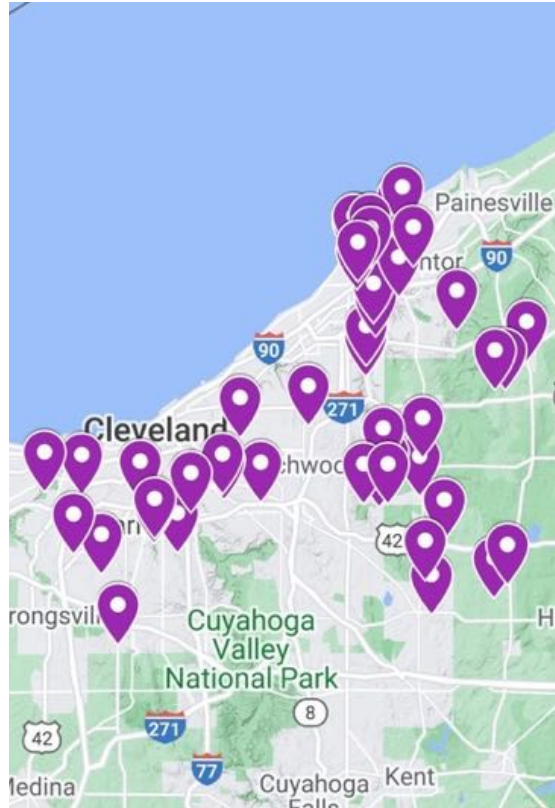
Our approach

We first survey water levels. We then leave our reporting devices to **continuously track water levels**. All within fractions of an inch.



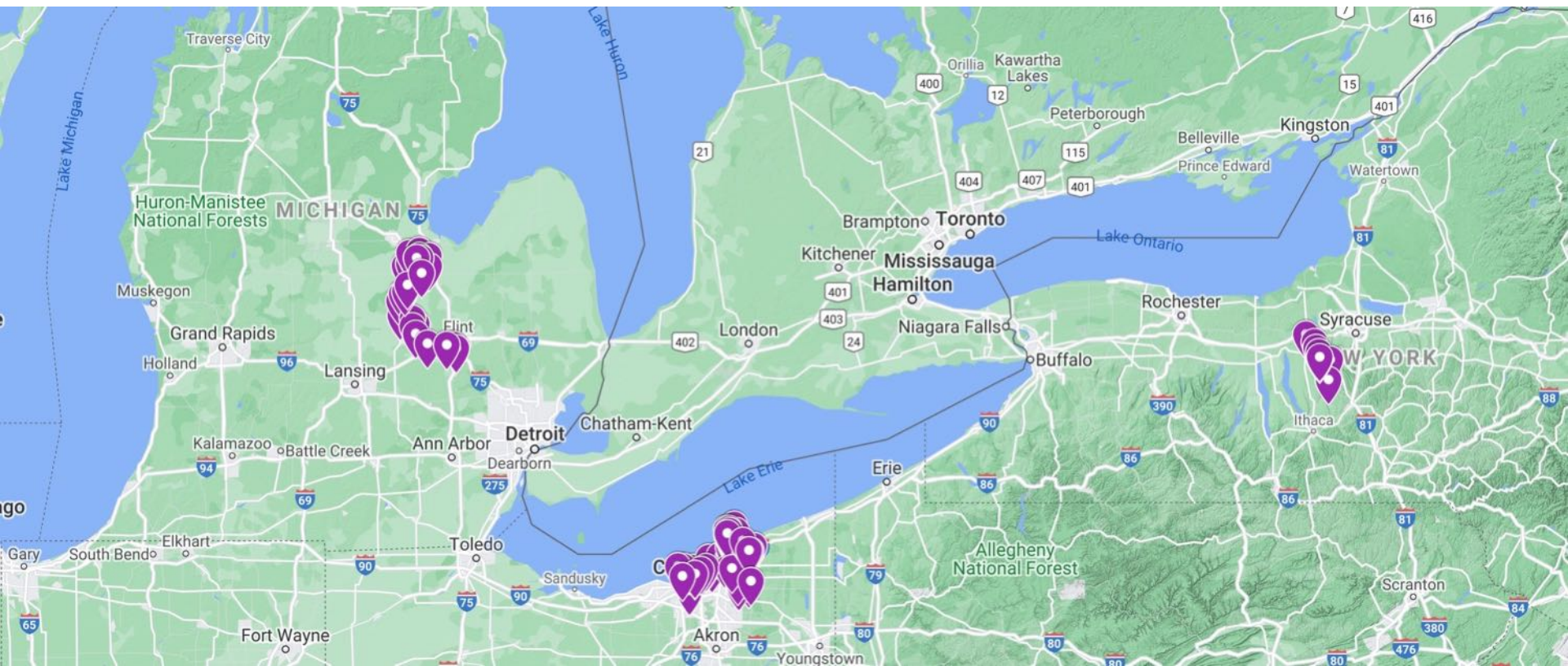
This fall

Most recently, we brought over fifty devices online in Cleveland.



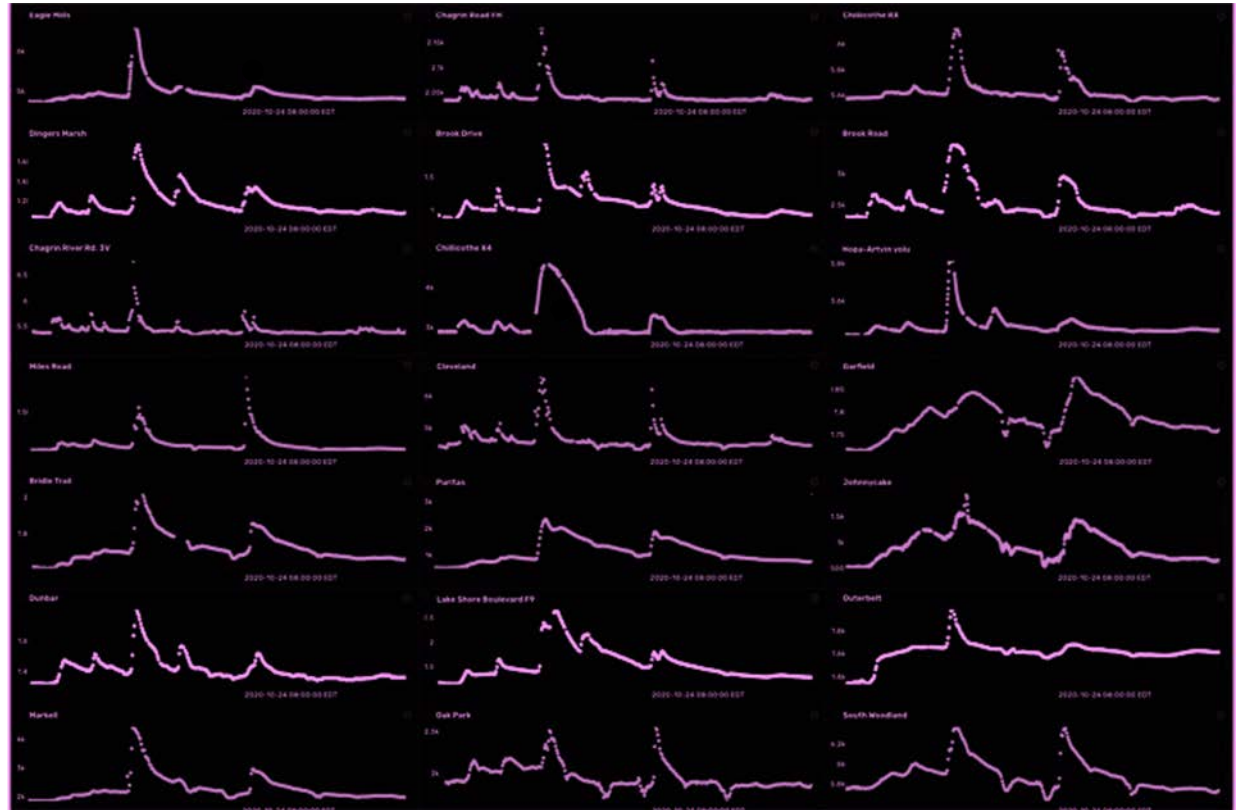
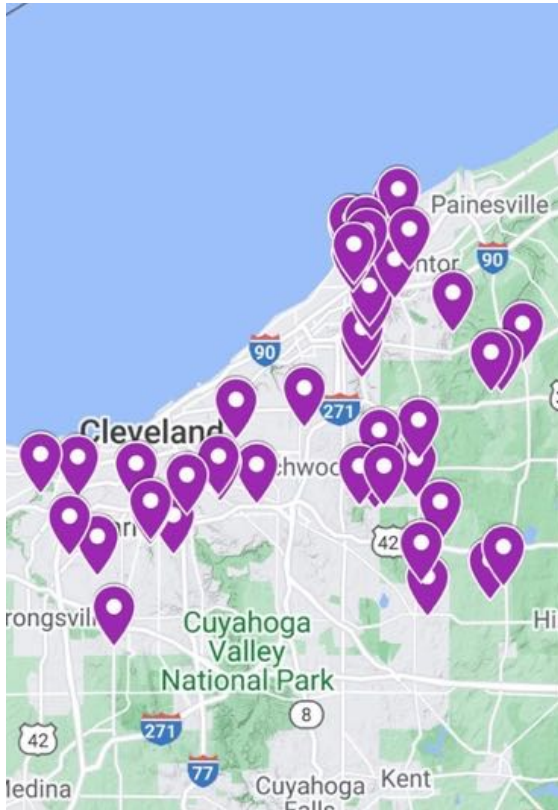
This fall

With other large deployments in Michigan and New York.



Dense coverage

Watch levels evolve over time. And space.



Built for purpose monitors

To get the best possible measurements we have designed our own in-house devices.



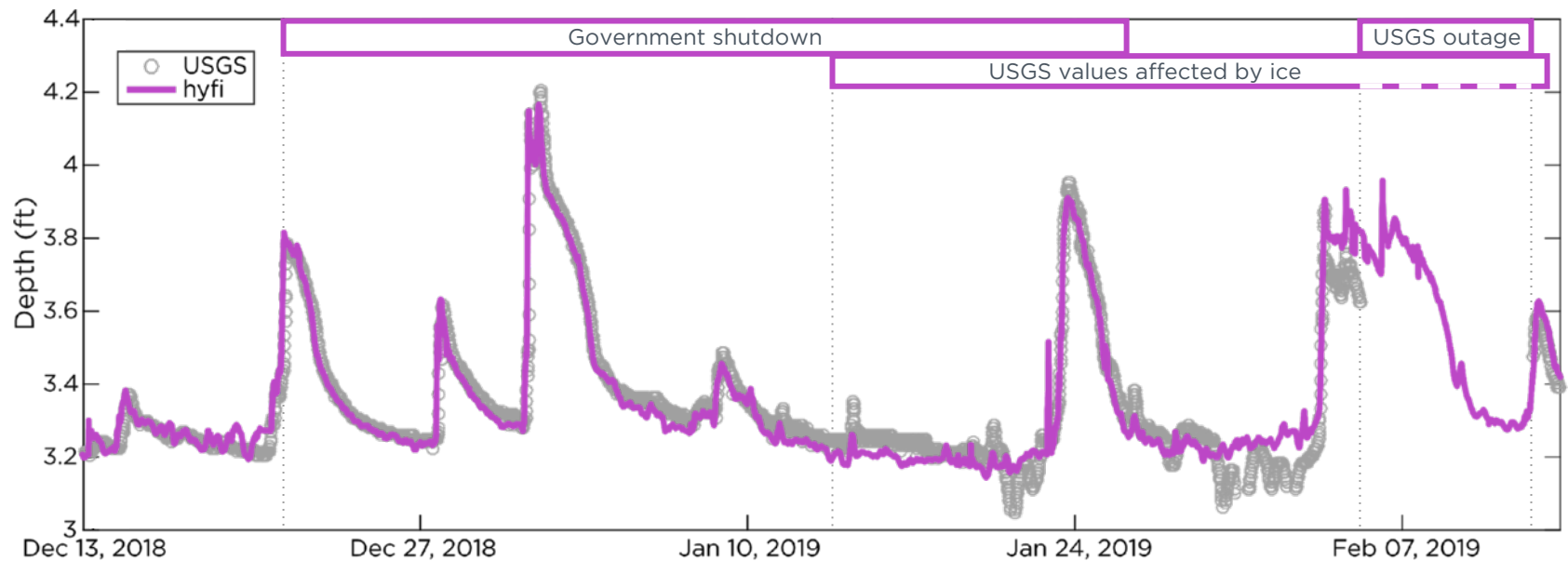
Dimensions, approx.
17" x 2.5" x 3.5"



Stay connected. Even during winter.

Stay informed

We keep an eye on every single measurement to ensure quality. Even during federal outages.



Future proof

Devices can be replaced within **moments**, by just about anyone. No data outages and no college degrees required.



Our devices are future proof because we swap the unit out with the latest tech and security features.

Site-level awareness

Be it a river, stream, a basin, or a parking lot, we continuously track water levels to **alert you within minutes.**



Remove guess work by using actual data, rather than having to drive out or make guesses based on far away river gages.

Customized experiences

All **community members** use data differently. Instead of making everyone go to the same website, we **collaborate with communities** to deliver a valuable experience and maximize engagement.



Text and email alerts, road closures



Paddling and boating reports, community outreach



Custom dashboards and embeddable website widgets



Work order and workflow integration



Model calibration and asset performance reports

Community focused

Our expertise is water levels. Our focus is maximizing their benefit to you and your community.

Localized Flooding



Credit: [Shutterstock](#)

Road Management



Credit: [Artaxerxes, CC BY-SA 4.0](#)

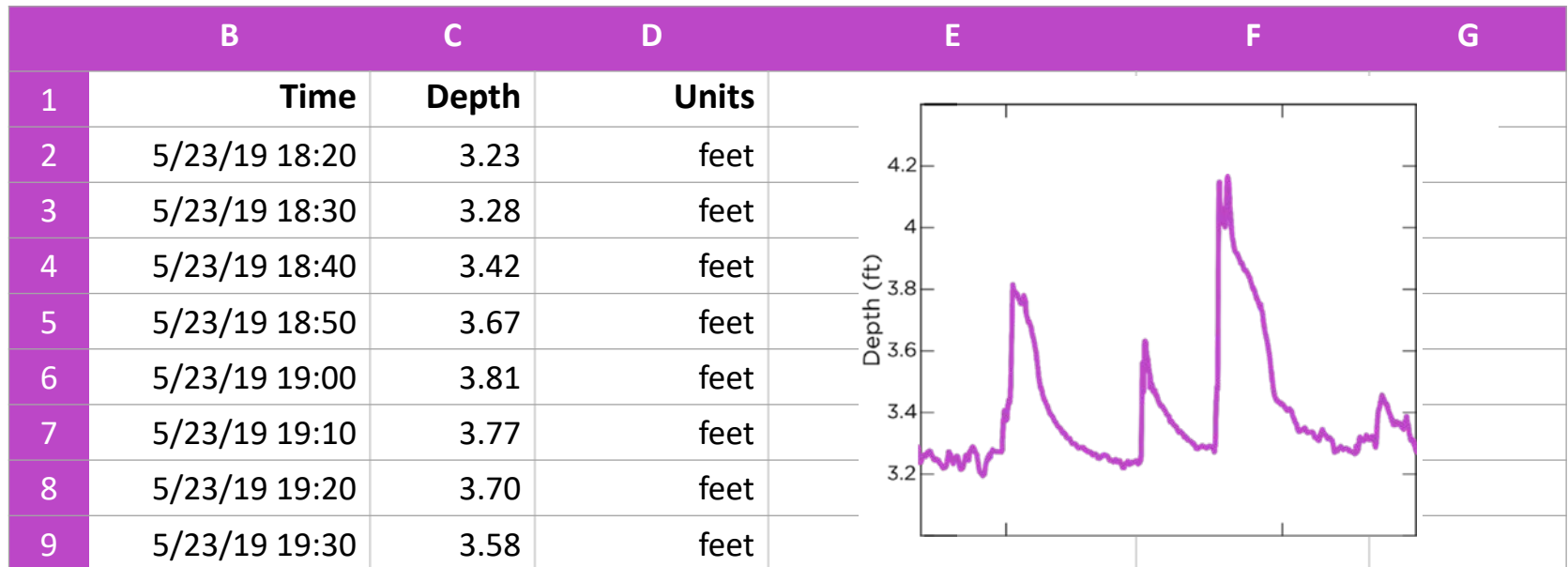
Ideal River Conditions



Credit: [River Queen Voyages via Yelp](#)

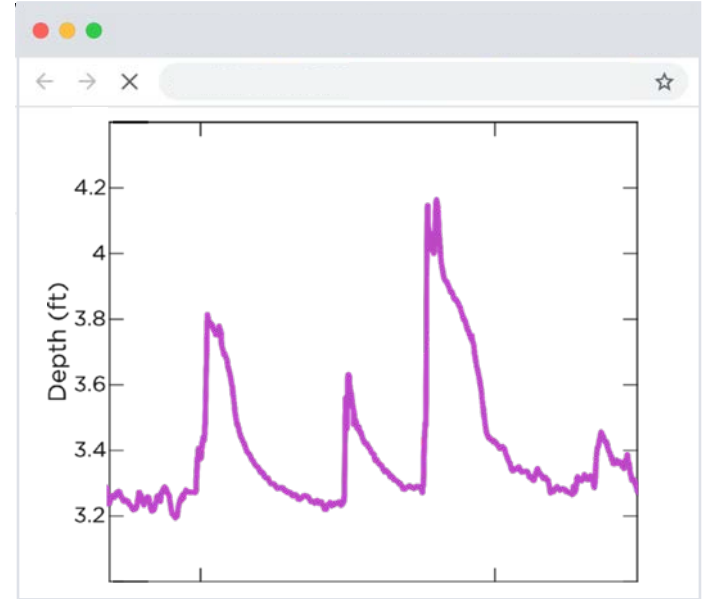
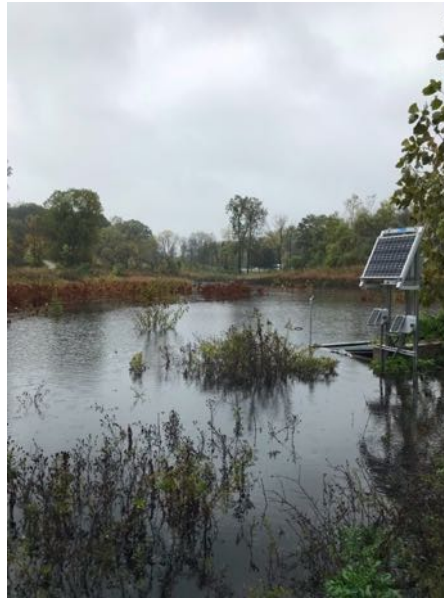
Easier reporting

Our tools and quality assurance protocols help instantly generate reports for regulators and the public.



Maximize **asset performance**

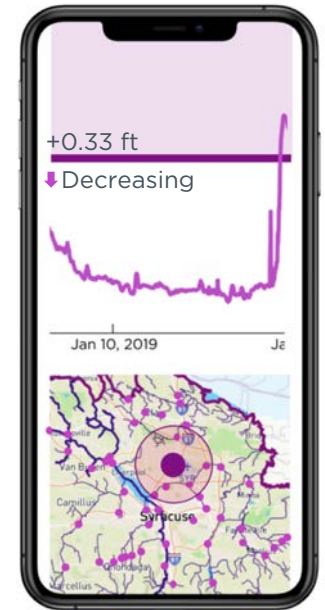
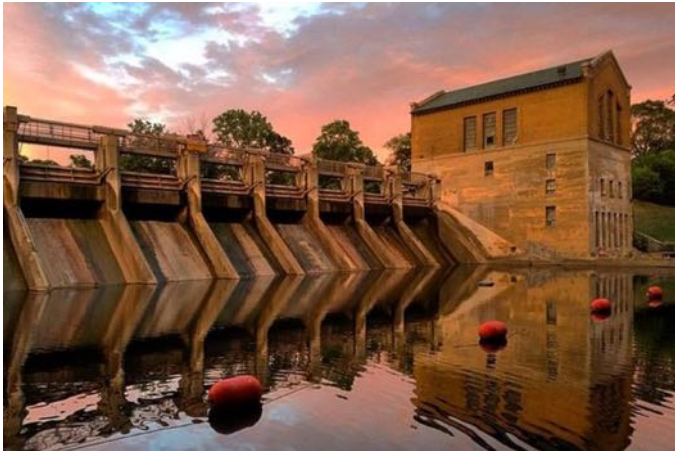
Is it infiltrating? Is it overtopping?



Asset monitoring and trends help determine if design criteria are met.

Manage lake and river levels

Bye bye surprise calls to check levels on site.



Be the first to know if levels are too high, too low, or changing too fast.

Learn more

To explore a partnership with [hyfi](#),
email us directly brandon@hyfi.io.

