



# Smart Cities In Action Webinar Series

*Improving communities safety and resilience*

Smart Christchurch – Strategy and Sentinel: earthquake monitoring network

26 April 2023

Michael Healy, Manager – Smart Christchurch

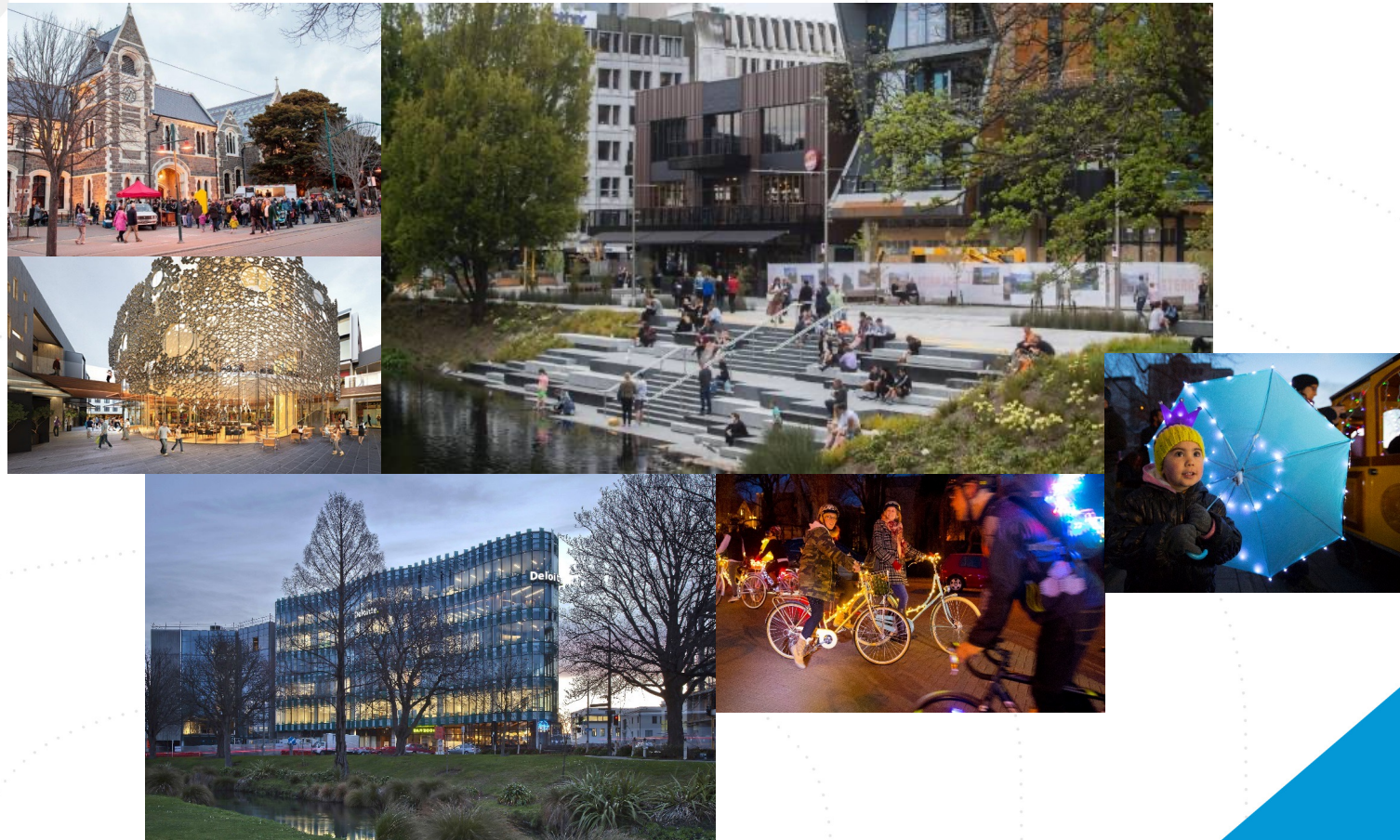
**share.  
connect.  
innovate.**

## Agenda

1. Smart Christchurch Strategy
2. Sentinel – Earthquake Monitoring Network

## The Council's Vision

Christchurch: a city of opportunity for all...open to new ideas, new people and new ways of doing things - a city where anything is possible.



share.  
connect.  
innovate.



# Smart Christchurch Programme

## Purpose:

- To trial technology and approaches that accelerate Christchurch becoming a city of opportunity for all – a city where anything is possible

## Vision:

- To promote Christchurch as an exemplar open and connected city, showcasing solutions that make life better and are replicated by others

share.  
connect.  
innovate.

## Smart Christchurch Programme

- People-centered
- City-wide collaboration
- Co-design
- Replication

**share.  
connect.  
innovate.**

## Smart Christchurch Programme

- How do we choose new initiatives?
- How do we triage?
- What is the initiative lifecycle?

**share.  
connect.  
innovate.**

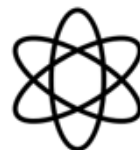
### Vision & principles



Open data,  
open platform,  
open city



Aggregating and  
visualising  
real-time data



Leveraging the  
collective genius  
around us



Removing  
barriers  
to access



Inspiring  
fresh  
thinking

### Community outcomes



**Resilient communities**



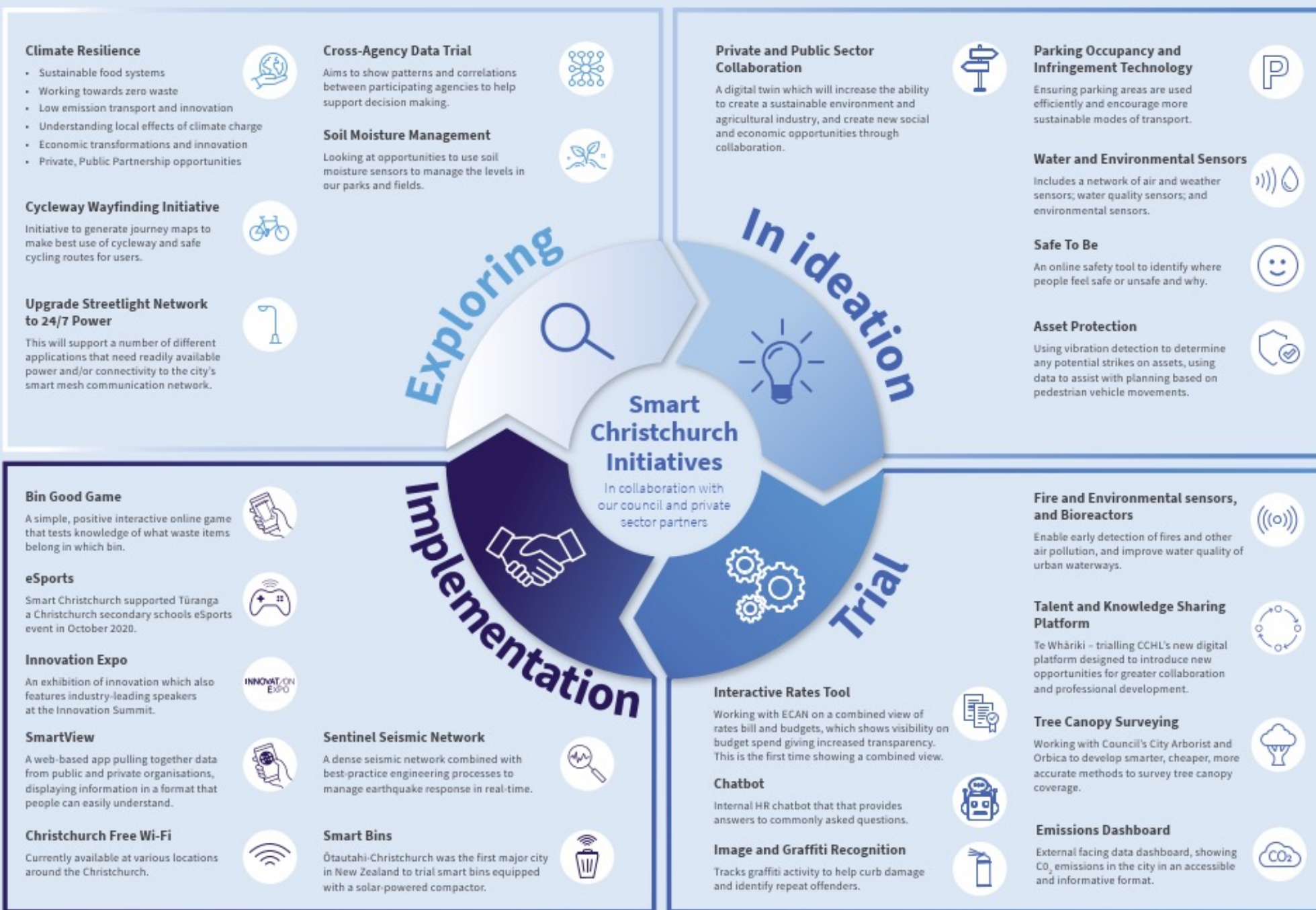
**Liveable city**



**Healthy environment**



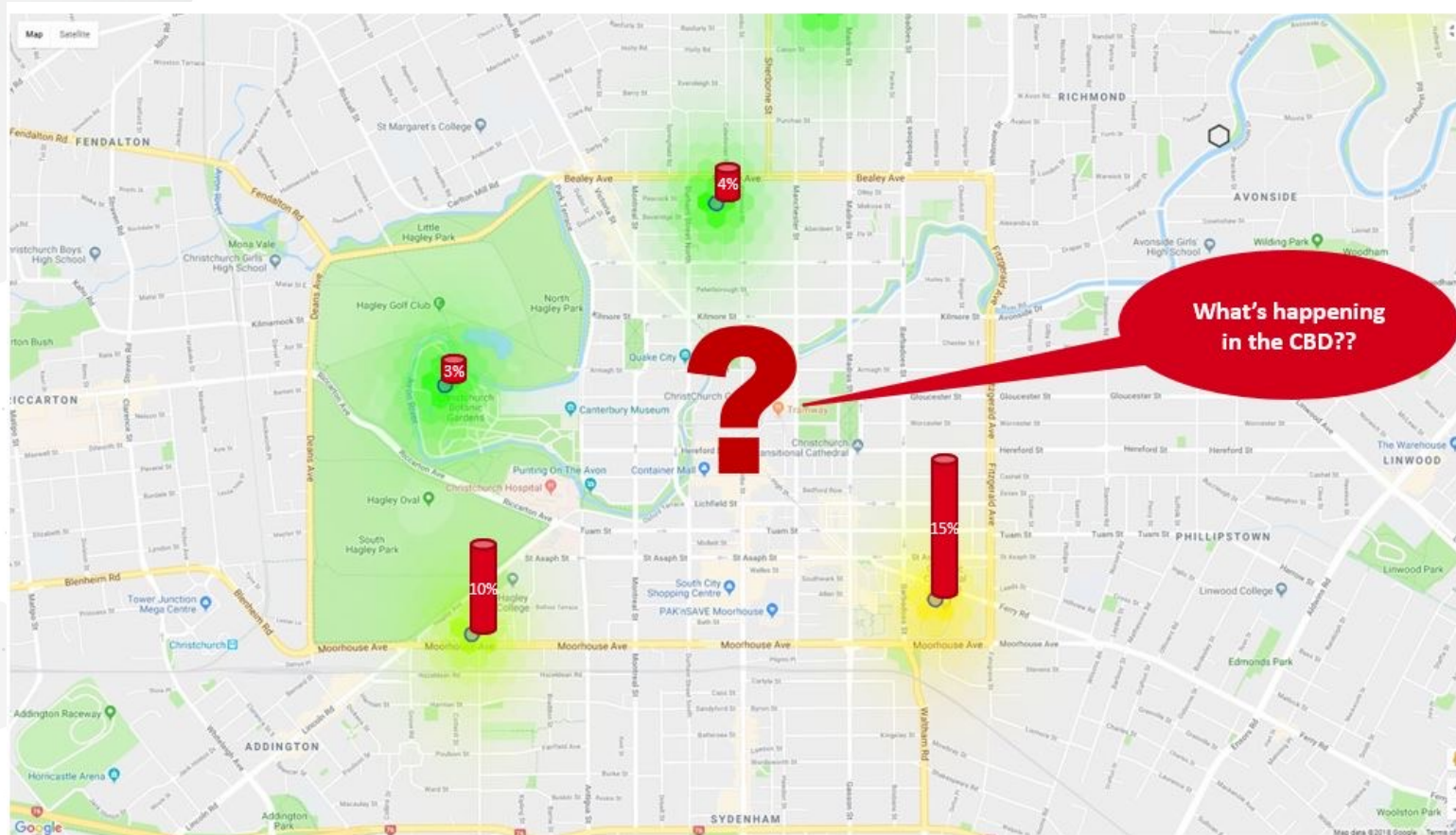
**Prosperous economy**



# Sentinel: Earthquake Monitoring Network

share.  
connect.  
innovate.

# The Problem

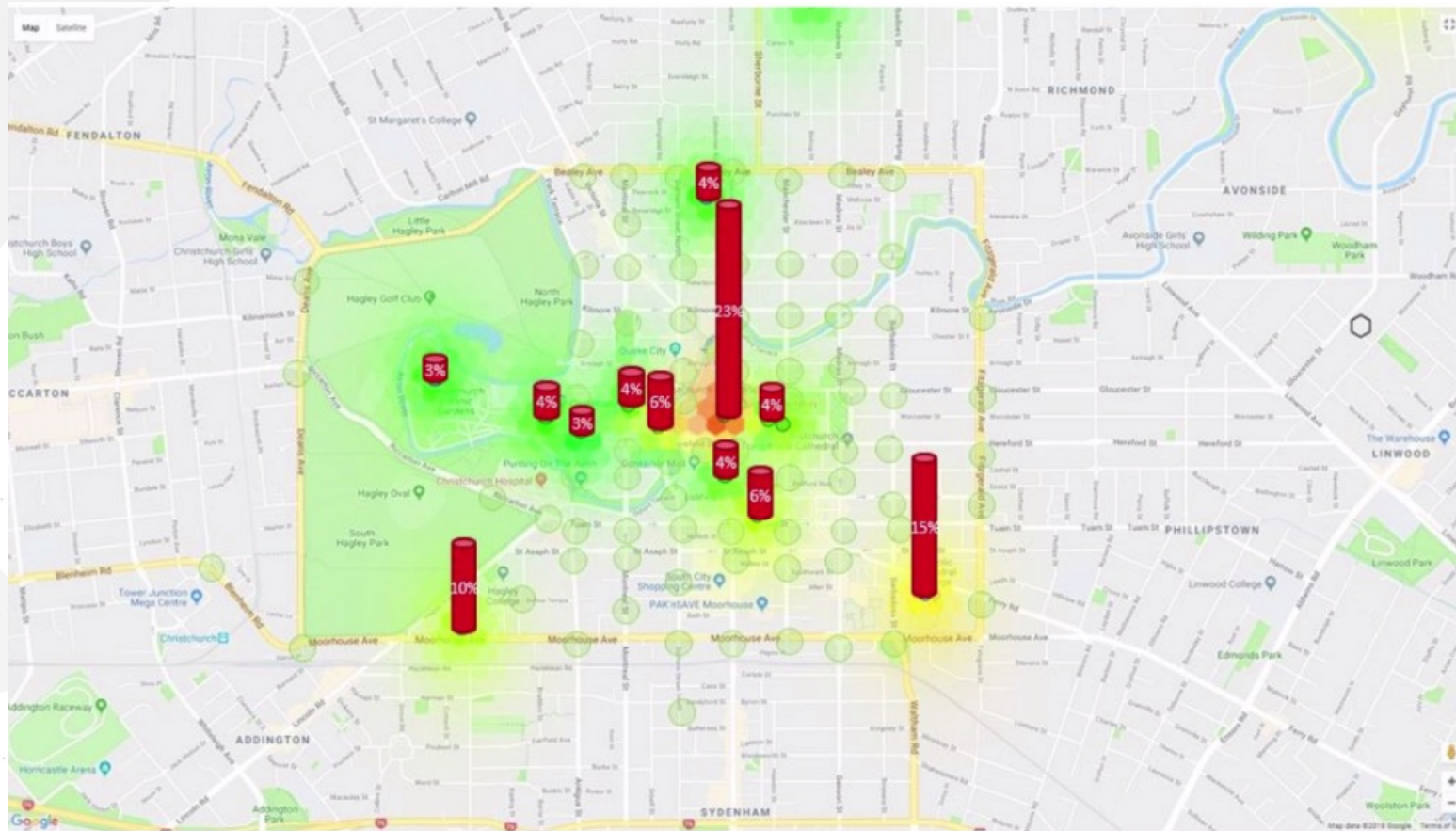


January 20 2018 M4.0 5 km SE of Christchurch, shaking relative to NZ Building Code Ultimate Limit State (ULS).

share.  
connect.  
innovate.



## Proving the requirement



January 20 2018 M4.0 5 km SE of Christchurch, shaking relative to NZ Building Code Ultimate Limit State (ULS).

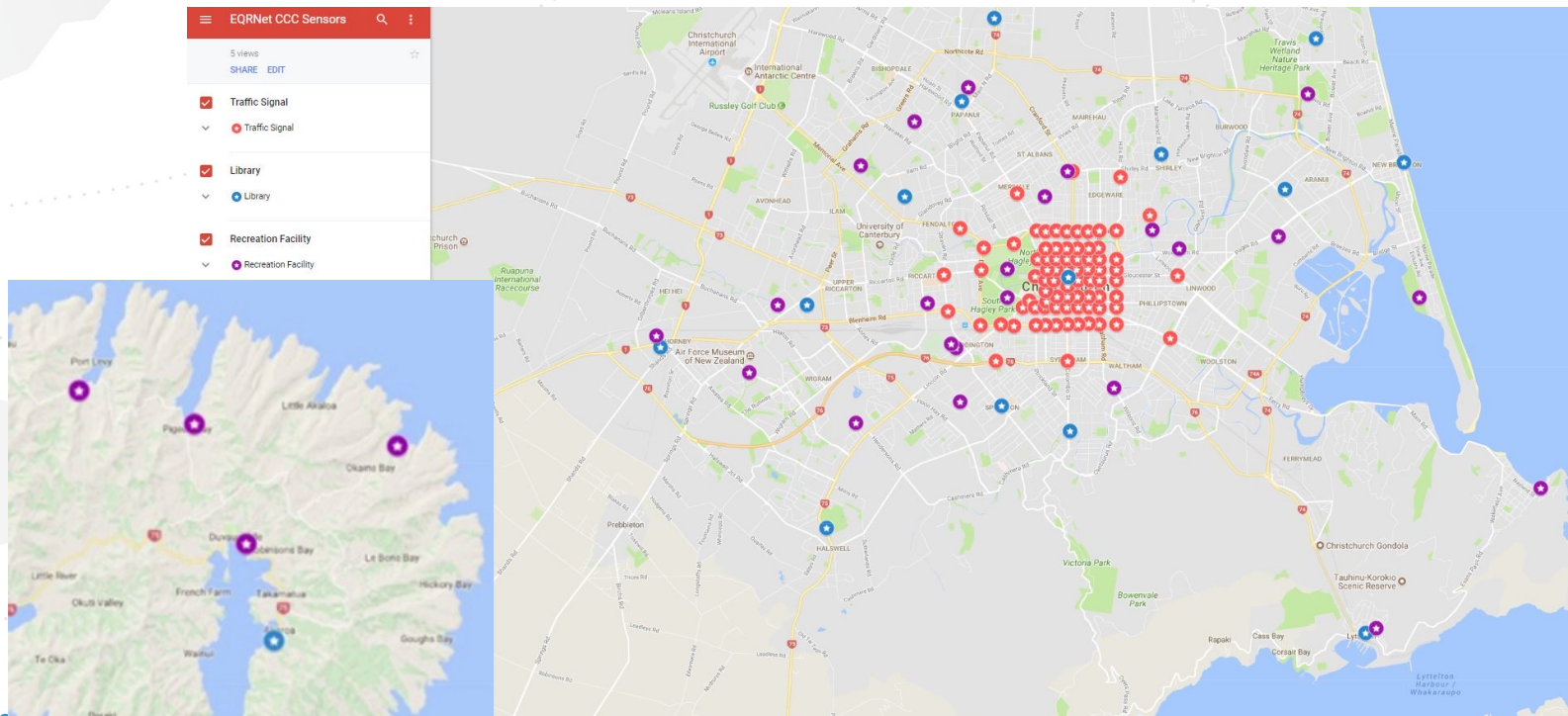
share.  
connect.  
innovate.



## The Solution

### Sentinel: Seismic Resilience as a Service

- Smart Christchurch funded 150 earthquake monitoring sensors



share.  
connect.  
innovate.





Traffic signals  
cabinets

share.  
connect.  
innovate.



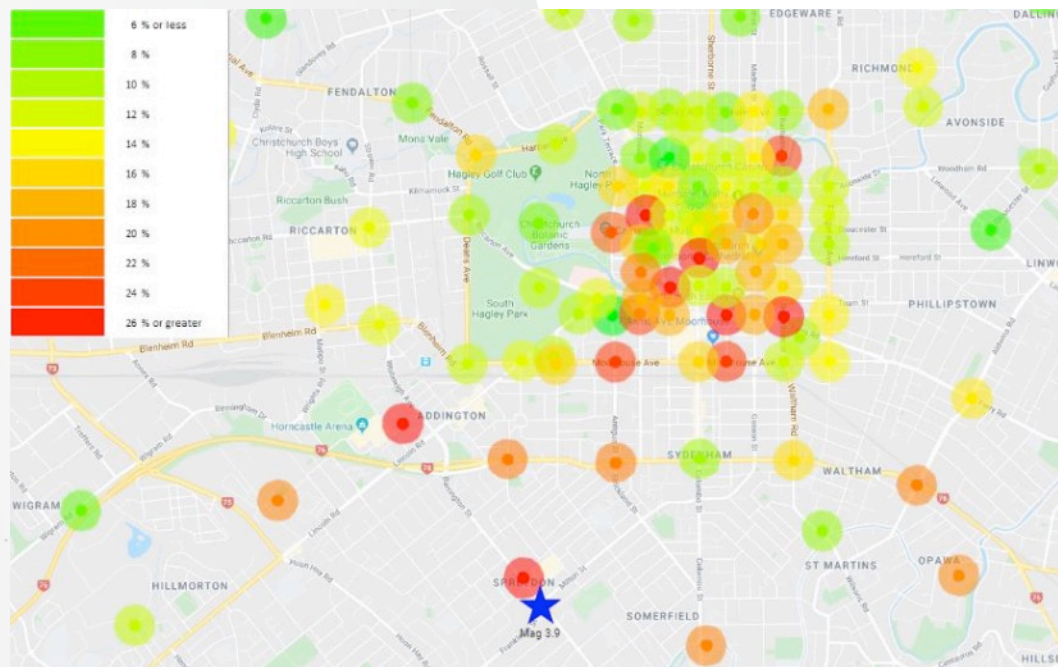
Libraries and  
pools and  
buildings



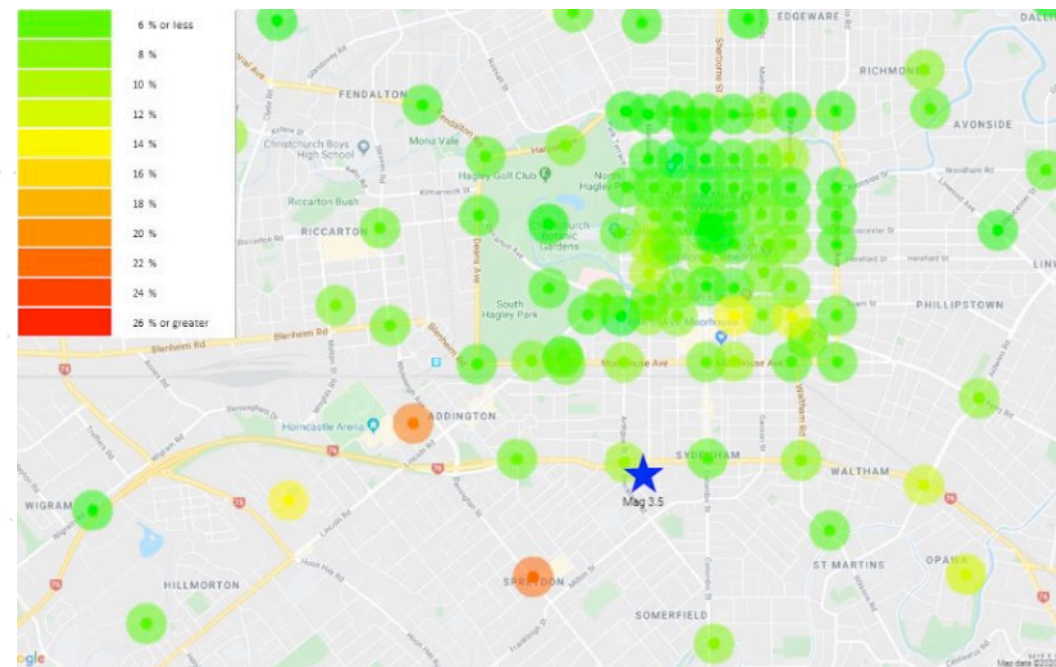
Pumping  
stations



## Every quake is different – even similar sizes and locations



M3.9, 22 July 2019 – peak shaking relative to building capacity



M3.5, 20 July 2019 – peak shaking relative to building capacity



### Moderate earthquake (6 hours ago)

Fri Apr 21 2023 7:37 AM

Magnitude: 4.4

Depth: 8 km

10 km north-east of Christchurch



### Light earthquake (6 hours ago)

Fri Apr 21 2023 7:31 AM

Magnitude: 3.6

Depth: 10 km

10 km north-east of Christchurch



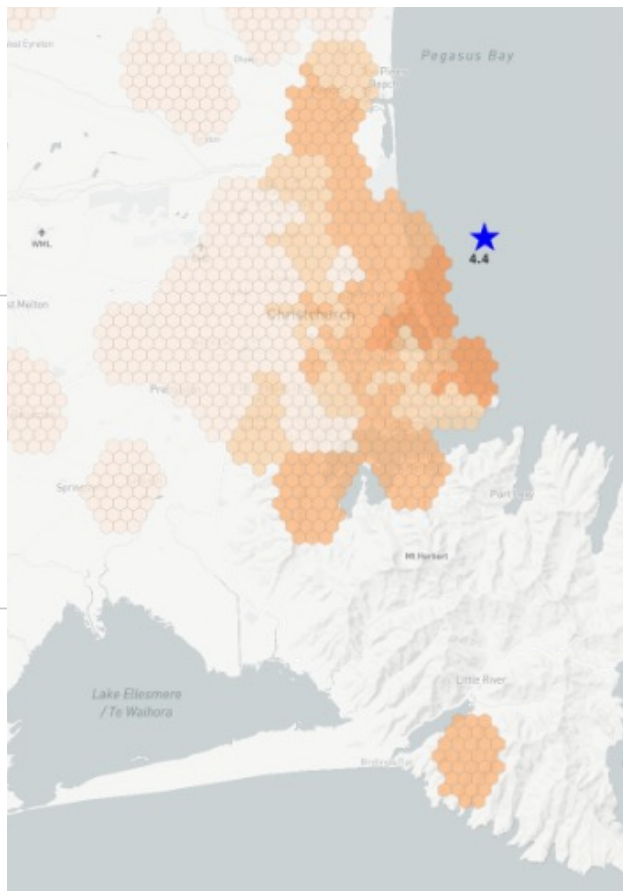
### Moderate earthquake (12 hours ago)

Fri Apr 21 2023 2:21 AM

Magnitude: 4.0

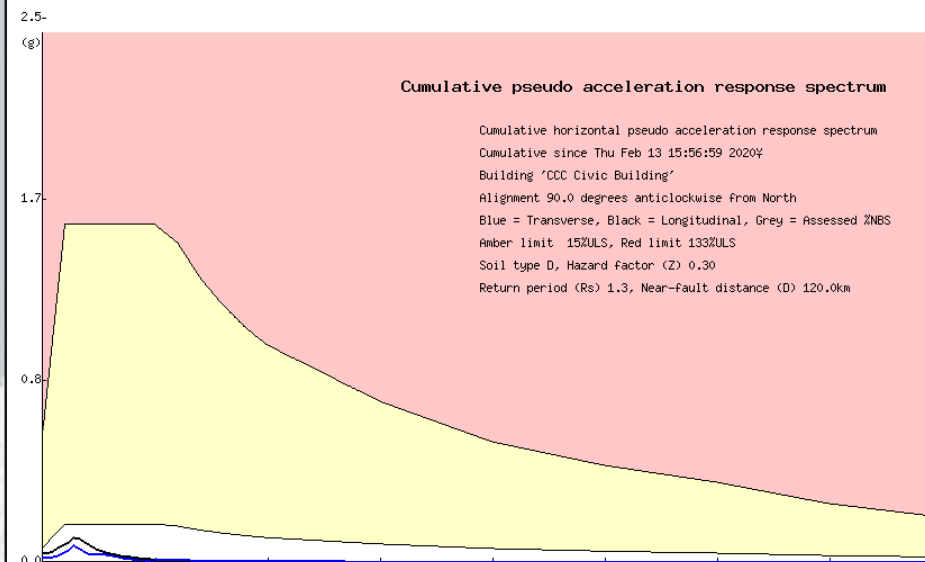
Depth: 9 km

10 km north-east of Christchurch



Michael Healy, your reinforced concrete frame building, CCC Civic Building at 53 Hereford St, experienced Do not evacuate. Visual inspection for hazards, otherwise carry on business as usual.

This result has best confidence, based on sensor proximity.



share.  
connect.  
innovate.

## Outcome

- Business continuity.
- Civil defence can deploy targeted response.
- Residents and building owners can respond based on the information at hand.
- The solution is scalable to the whole of NZ.

**share.  
connect.  
innovate.**

## Lessons Learnt

- Using existing infrastructure to implement a dense network of sensors for earthquake monitoring.
- Funding the technology trial to enable adoption.
- Work with vendors with your requirements for the benefit of the community.

**share.  
connect.  
innovate.**

## Contacts

- Michael Healy – [michael.healy@ccc.govt.nz](mailto:michael.healy@ccc.govt.nz)
- [smartchristchurch@ccc.govt.nz](mailto:smartchristchurch@ccc.govt.nz)

share.  
connect.  
innovate.

# Thank you

**share.  
connect.  
innovate.**